



**Drop
Forged
Chain**

Table of Contents

Section 1 - Drop Forged Rivetless Chain



What is Rivetless Chain.....1.1
Chain Specifications.....1.2

Section 2 - Overhead Trolley



Overhead Trolley Line-up.....2.1
3" Overhead Trolley.....2.2
4" Overhead Trolley.....2.3
6" Overhead Trolley.....2.4
Inverted Overhead Trolley.....2.5

Section 3 - Overhead Trolley Attachment



Attachment Purpose.....3.1
Attachment Type.....3.2
Load Bar Assembly.....3.3

Section 4 - Pusher Dog



3" Pusher Dog.....4.1
4" Pusher Dog.....4.2
6" Pusher Dog.....4.3

Section 5 - Caterpillar Drive Chain



3", 4" & 6" Drive Chain.....5.1

Section 6 - Hand Push Trolley



Manufactured Push Trolley.....6.1

Section 7 - Other Parts of Use

Relevant Accessories.....7.1

Section 8 - How to Order

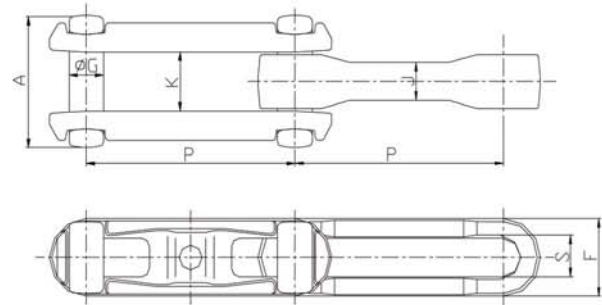
Order Sheet.....8.1

What is drop forged rivetless chain?

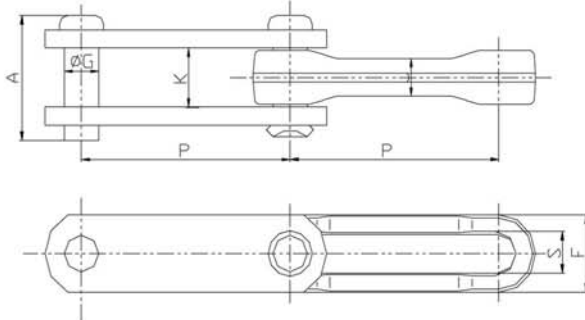
Drop Forged Rivetless Chains are available in a range of alloy materials to forge strength and head treated for increased wear resistance. Precise pitch control provides consistency and reliability, especially for automated systems. It transmits motive power through chain conveyors, overhead power & free, or inverted power & free, and flexes both vertically and horizontal to accommodate changes in direction. It was assembled using side links, center links and chain pins, Simple design permits quick assembly or dismantling without tools.



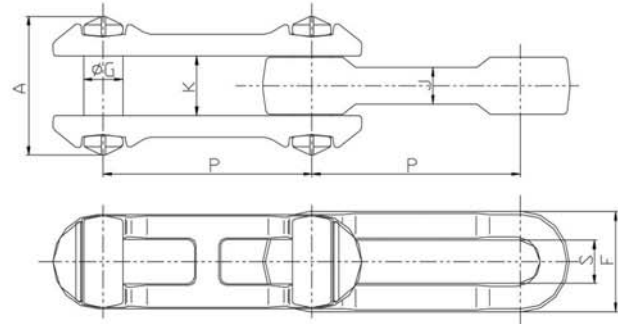
X Style



S Style



H Style



All dimensions are metric unless otherwise indicated

Part Number	RPM Chain Number	Specifications							Average Tensile Strength kN	Approx. Weight kg/m
		P	A	F	G	J	K	S		
001.0016.080.00	80H	80	73	42	18.4	20	34.5	19.5	250	7.8
001.0017.004.06	468H	102.4	84.1	47.8	18	29.5	42.9	22.2	318	11.5
001.0018.003.04	X348	76.6	46	27	12.7	12.7	20.6	13.5	110	3.2
001.0019.004.05	X458	102.4	57	37	16	16	26.5	17.5	210	5.2
001.0020.006.07	X678	153.2	77	50.8	22.2	21	34.2	25	320	9.5
001.0021.006.09	698	153.2	95.25	64	28	25.4	41.3	32	515	17
001.0022.009.09	998	229.4	95.25	67.5	28	25.4	41.3	32	515	14.8
001.0023.009.11	9118	229.4	123.8	76.2	35	33.5	52	38.1	832	24.2
001.0024.003.04	S348	76.6	38.9	28.6	12.7	12.7	20.6	13.5	110	3.2
001.0025.004.05	S458	102.4	52.1	35	16	16	26.5	17.5	210	5.2
001.0026.006.07	S678	153.2	69.8	50.8	22.2	21	34.2	25	320	9.5
001.0027.006.09	S698	153.2	73	68.3	28	25.4	41.3	32	515	17
001.0028.009.11	S9118	229.4	98.4	77.8	35	33.5	52	38.1	832	24.2
001.0029.100.00	P100	100	57	37	16	16	26.5	17.5	210	5.2
001.0030.160.00	P160	160	78	54	24	20.5	36	28	318	10.3

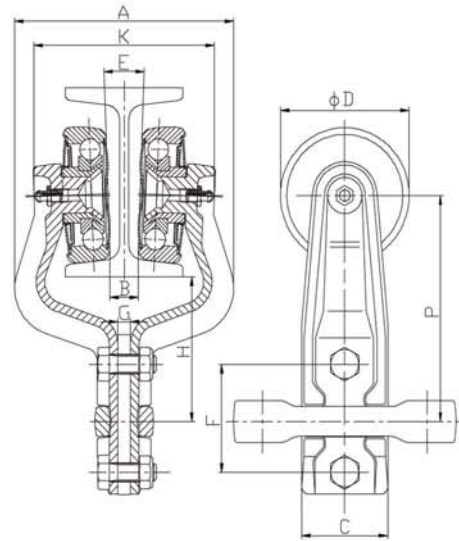
The chain specifications concerning the strengths are related to monorail conveyors where the load is directly attached to the drop forged rivetless chain. Another is to power and free conveyors include part storage and production buffers, paint application, final assembly procedures, line side sequencing.

Normally Rivetless Chain & Overhead Trolley Line-up

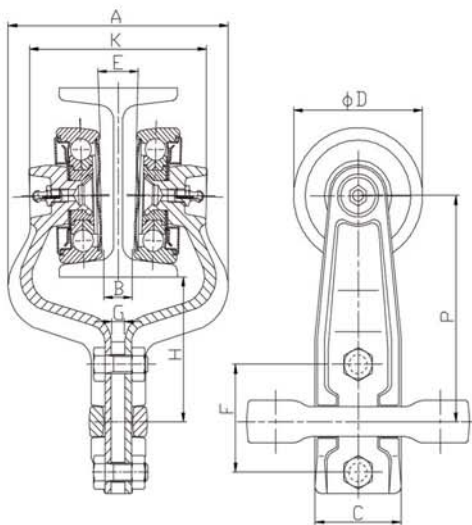
RPM Number	X-348	X-458	X-678	P100	P160
Chain Pitch (mm)	76.6	102.4	153.2	100	160
Single Trolley Load Capacity (Kg)	100	200	600	200	750
Operation Speed (M/min)	0.5~18	0.5~18	1~18	0.5~15	0.5~15
Min.Trolley Center Spacing (mm)	153.2	204.8	306.4	200	320
Max.Trolley Center Spacing (mm)	919.2	819.2	919.2	900	960
Chain Maximum Allowable Load (Kg)	900	1500	2700	1500	3000
Chain Average Tensile Strength (Kg)	10900	21800	38600	21800	40000
Overall Conveyor length (M)	450	600	750	500	700
Trolley Maximum Allowable Load (Kg)	1100	1800	5000	1800	4000
Trolley Average Tensile Strength (Kg)	1800	3600	7700	3600	8000
Trolley Wheel Outdiameter (mm)	60	82	82	82	120
Vertical Drop (mm)	64	82	100	82	125
Vertical Curve Minimum Radius (mm)	R1200	R1700	R3400	R2000	R3150
Horizontal Turns Minimum Radius (mm)	R300	R450	R600	R317	R404
I-Beam	#8	#10	#10	#10	#14、#16
Approx.Weight (Kg/m)	3.2	5	9.5	4.8	10.3

In case of more than 800mm of trolleys spacing, **KASIN** representative will advice to use special trolleys, which are "I" Attachment as a filler, do not carry a load.

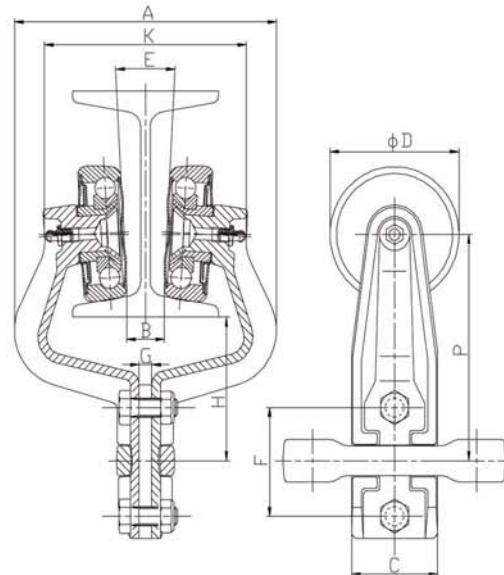
A Style



B Style



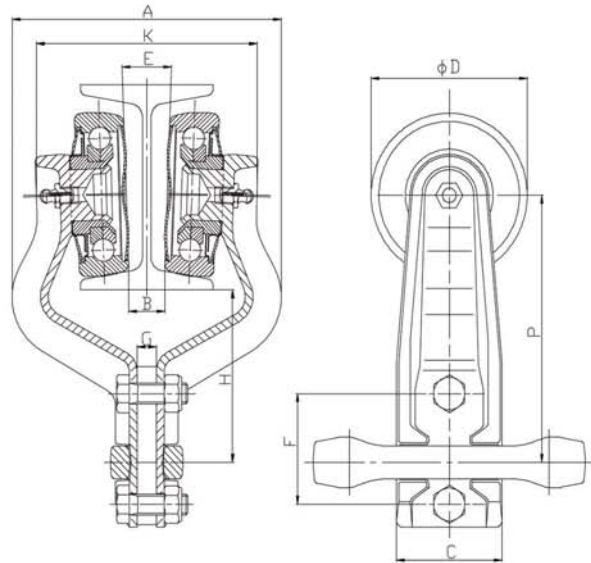
C Style



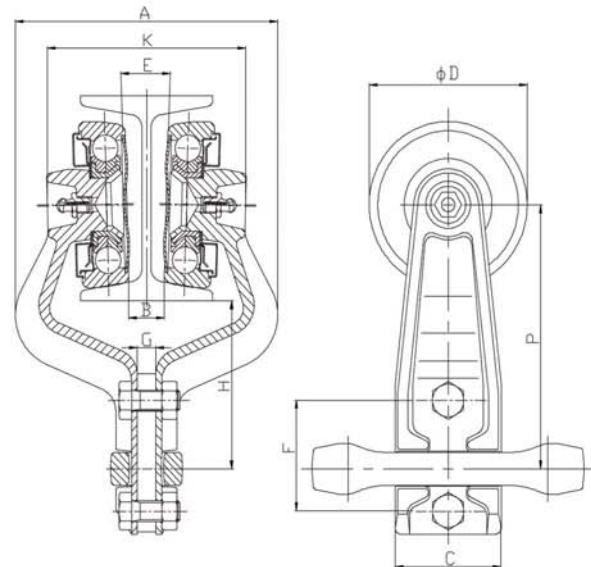
Part Number	RPM Trolley Number	Style	P	H	A	B	C	D	E	F	G	K	I-Beam
002.0031.003.04	X348	A	100	64	102	14	40	60	4°	47.8	6	84	#8
002.0032.003.04	X348	B	100	64	102	14	40	60	3°	47.8	6	82	#8
002.0033.003.04	X348	C	100	64	122	16	40	60	6°	47.8	6	94	#10



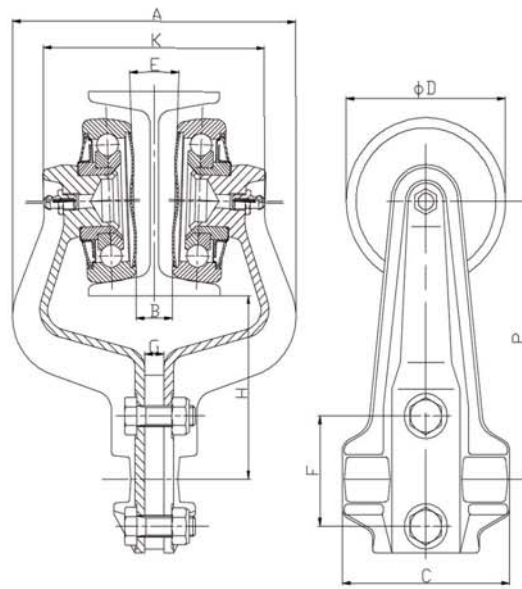
A Style



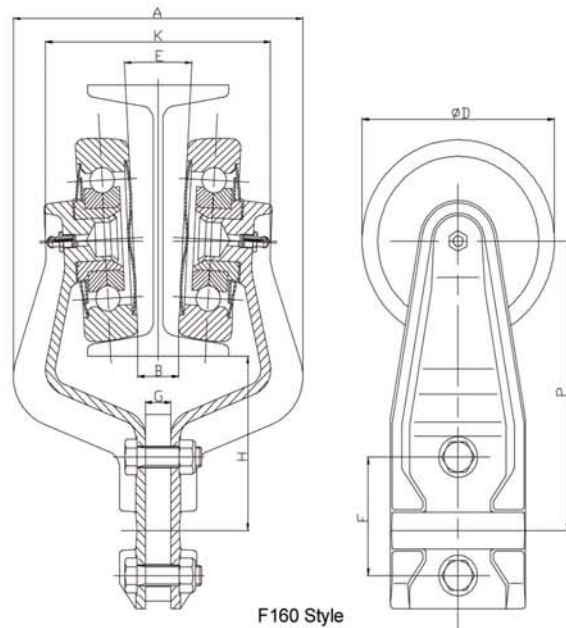
B Style



Part Number	RPM Trolley Number	Style	P	H	A	B	C	D	E	F	G	K	I-Beam
003.0034.004.05	X458 & P100	A	126	79	138	18	54	82	4°	54	9.5	113	#10
003.0035.004.05	X458 & P100	A	127	80	138	18	56	82	4°	54	9.5	113	#10
003.0036.004.05	X458 & P100	A	130	83	138	18	54	82	4°	54	9.5	113	#10
003.0037.004.05	X458 & P100	A	150	103	138	18	54	82	4°	54	9.5	113	#10
003.0038.004.05	X458	B	128.6	81	134.5	18	54	81	3°	54	9.5	101.5	#10

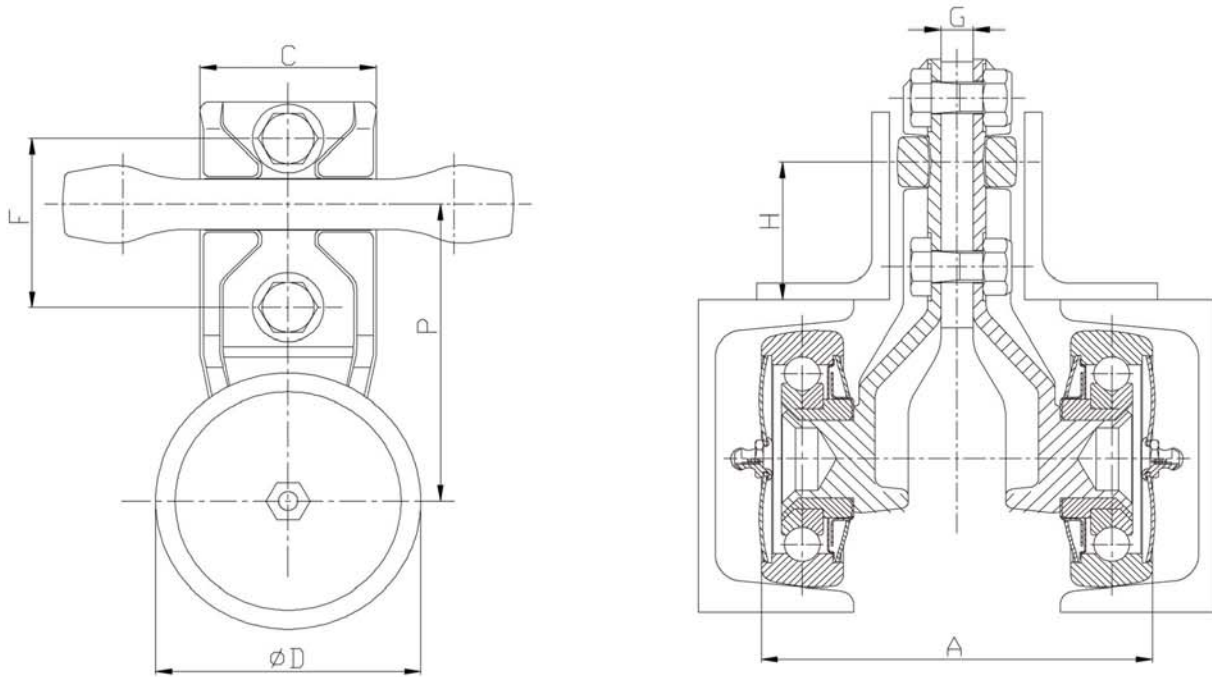


X678 Style



F160 Style

Part Number	RPM Trolley Number	P	H	A	B	C	D	E	F	G	K	I-Beam
004.0039.006.07	X678	136	89	146	18	86	82	4°	54	10	114	#10
004.0040.006.07	X678	134.5	87.5	142	18	86	82	4°	54	10	106	#10
004.0041.006.07	P160	171	103	180	26	84	120	6°	70	15	140	#14、#16
004.0042.006.07	P160	170	102	174	26	86	120	4°	70	15	148	#14、#16



Part Number	RPM Trolley Number	P	H	A	C	D	F	G	I-Beam
005.0043.003.04	X348	83	42	105	40	60	48	10	#8
005.0044.003.04	X348	86	45	93	40	60	48	10	#8
005.0045.004.05	X458	95	44	120	54.5	60	54	10	#10

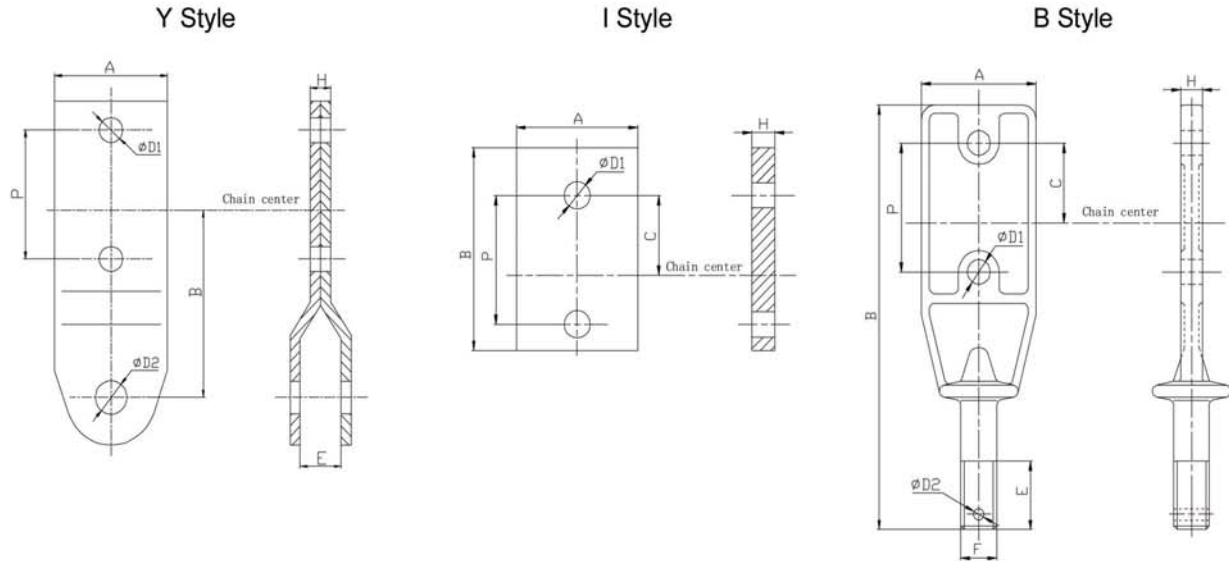


Trolley attachment carry loads or load carrying equipment on monorail and power & free conveyor.

They are positioned between half trolley and secured with bolts, locking trolley and are attached to rivetless chain.



Normally there are 3 types of attachments available: "Y"、"I" and "B"



Part Number	RPM Attachment Number	Style	P	A	B	C	D1	D2	E	F	H
006.0046.003.04	X348	Y	47.8	38	58	25.4	9	14.5	14	16.6	6
006.0047.004.05	X458	Y	54	50	78.5	33.5	10.5	14	18	19	9.5
006.0048.006.07	X678	Y	54	54	73	33.5	10.5	14.5	17	20	10
006.0049.160.00	P160	Y	70	80	133.5	43.5	13	20	32	47	15
006.0050.003.04	X348	I	47.8	38	68	25.4	9	/	/	/	6
006.0051.004.05	X458	I	54	50	80	33.5	11.5	/	/	/	9.5
006.0052.006.07	X678	I	54	50	80	33.5	11.5	/	/	/	10
006.0053.160.00	P160	I	70	80	105	43.5	13	/	/	/	15
006.0054.419.60	4196	B	47.8	38.1	146.1	25.4	8.3	3.6	22.2	1/2"	6.4
006.0055.422.10	4221	B	54	50.8	177.8	33.5	10.3	4.8	28.6	5/8"	9.5
006.0056.424.90	4249	B	70	76.2	222	43.5	14.3	5.6	34.9	7/8"	12.7



RPM *Load bar assembly*
for I-beam by drop forged
rivetless chain has a
capacity.

Order load bar or load
assembly composed of:

Load bar,

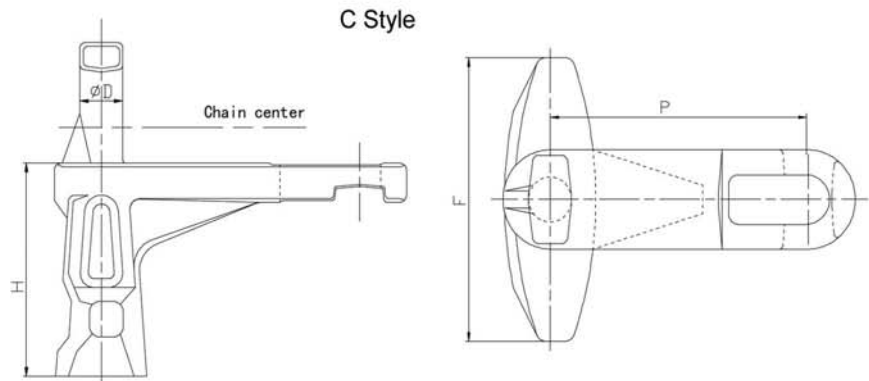
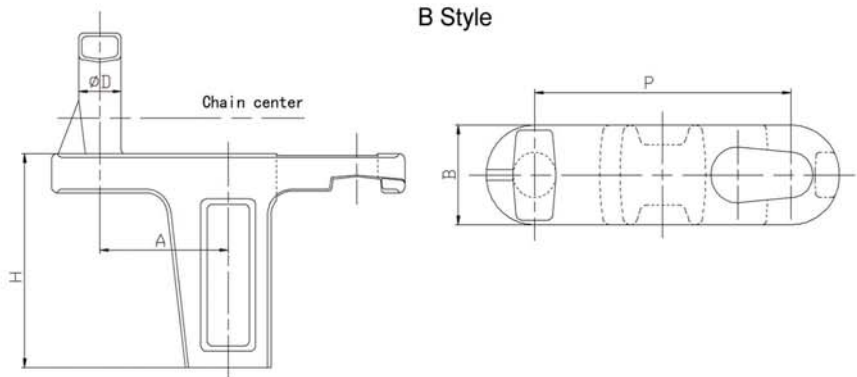
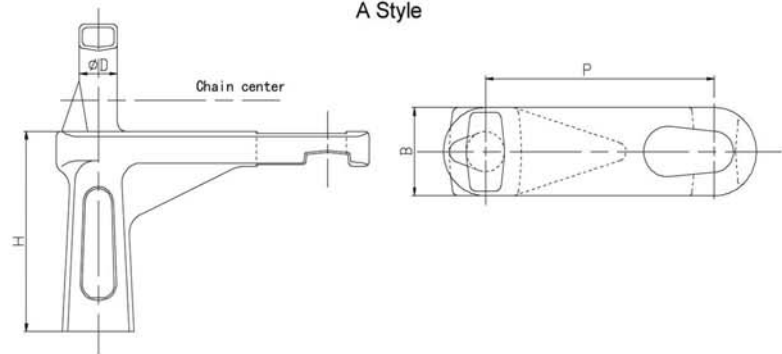
B Type of Trolle Attachment,

Spherical washers,

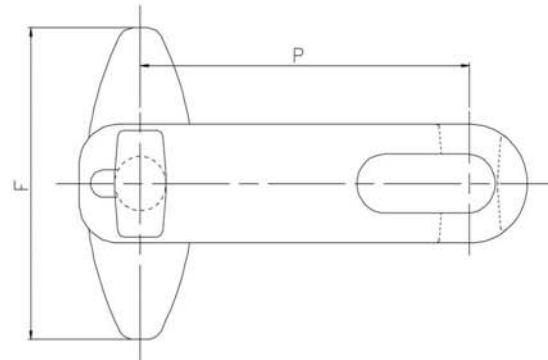
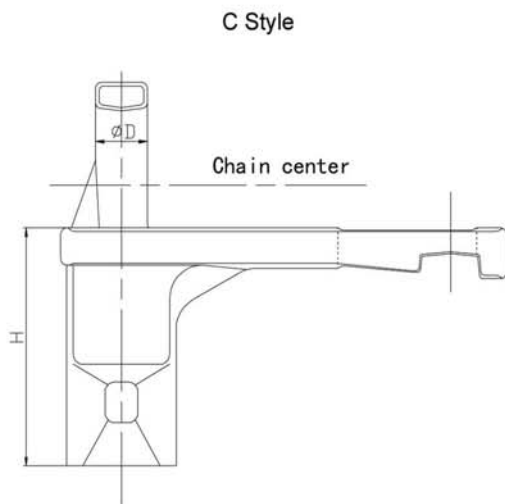
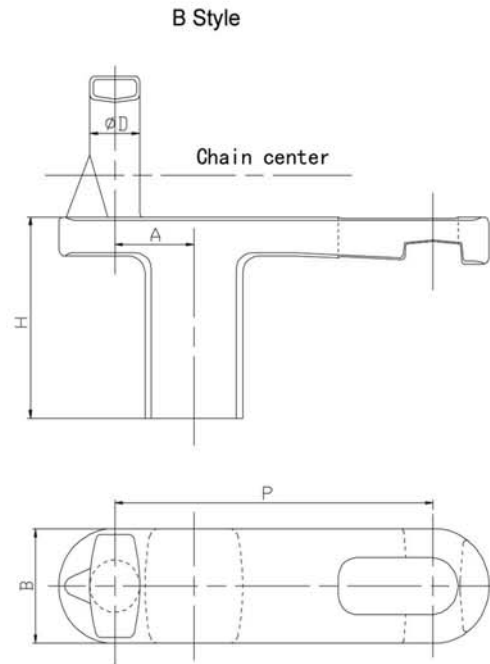
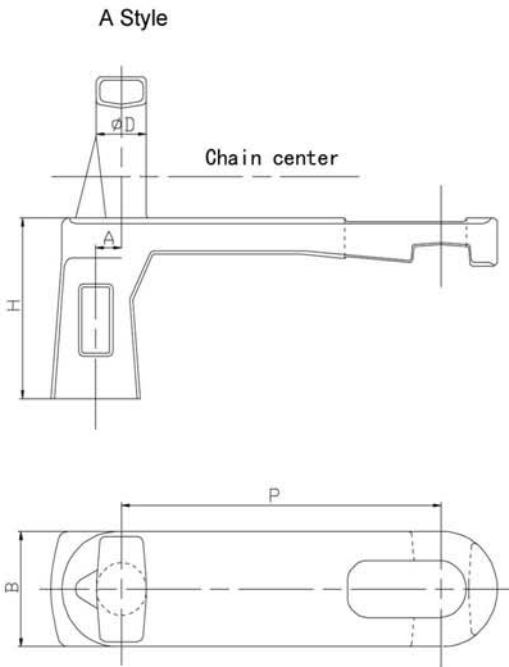
Tube spacer/wearresistant,

Slotted Hex Nuts ,

Cotter Pin.



Part Number	RPM Pusher Dogs Number	Style	P	H	A	D	F
007.0057.003.04	X348	A	76.6	63.5	/	12.7	/
007.0058.003.04	X348	B	76.2	60.3	38.1	12.7	/
007.0059.003.04	X348	C	76.6	60	/	12.7	80

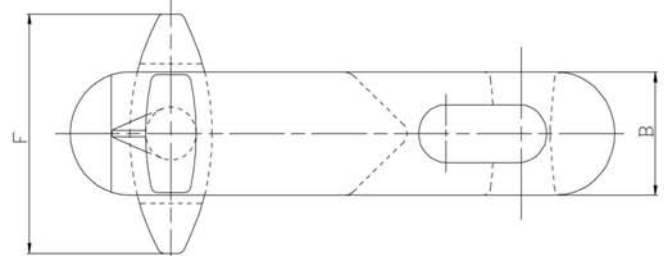
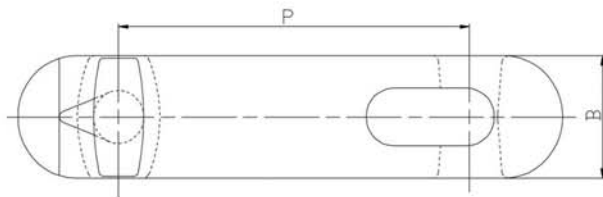
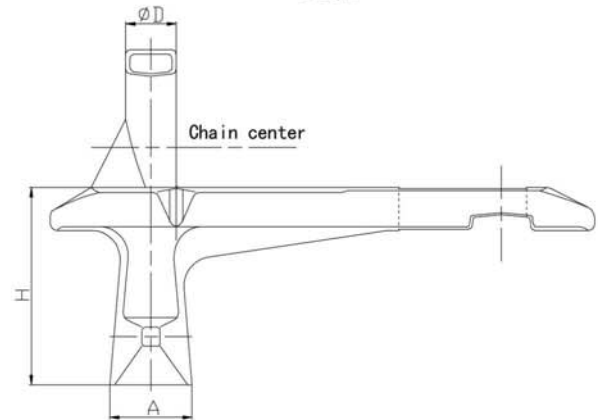
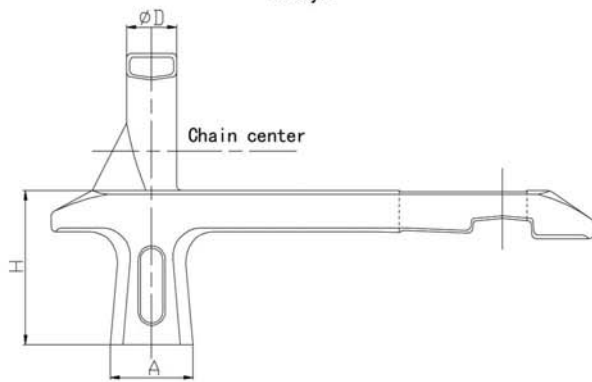


Part Number	RPM Pusher Dogs Number	Style	P	H	A	B	D	F
008.0060.004.05	X458	A	102.4	55	8.2	35	16	/
008.0061.004.05	X458	B	102.4	61.5	25.4	35	16	/
008.0062.004.05	X458	C	102.4	70.3	/	35	16	92



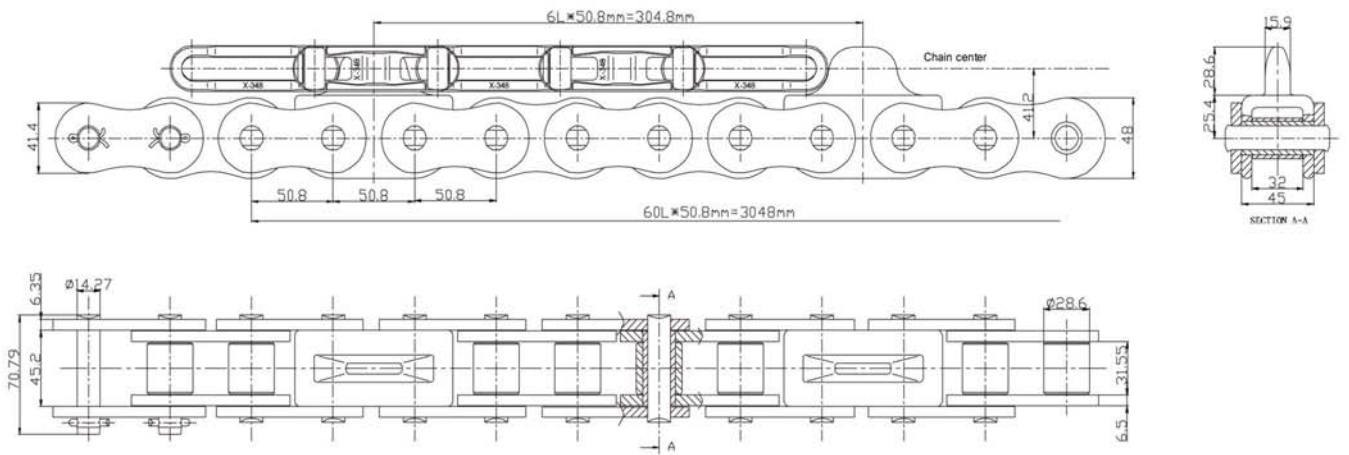
A Style

B Style

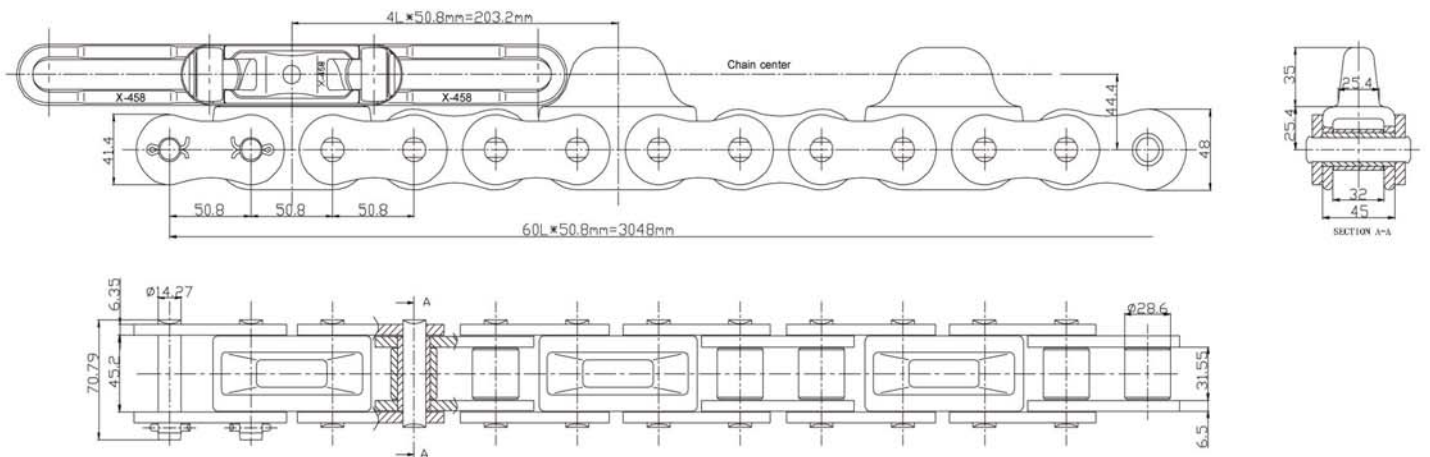


Part Number	RPM Pusher Dogs Number	Style	P	H	A	B	D	F
009.0063.006.07	X678	A	153.2	64	36	51	22	/
009.0064.006.07	X678	B	153.2	82	36	51	22	100

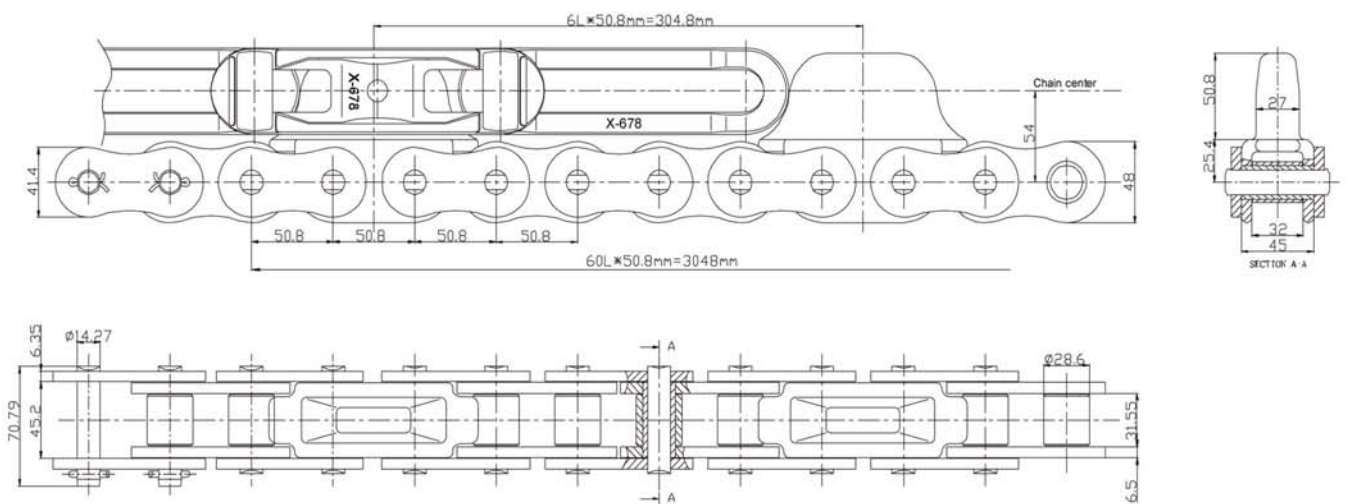
X348



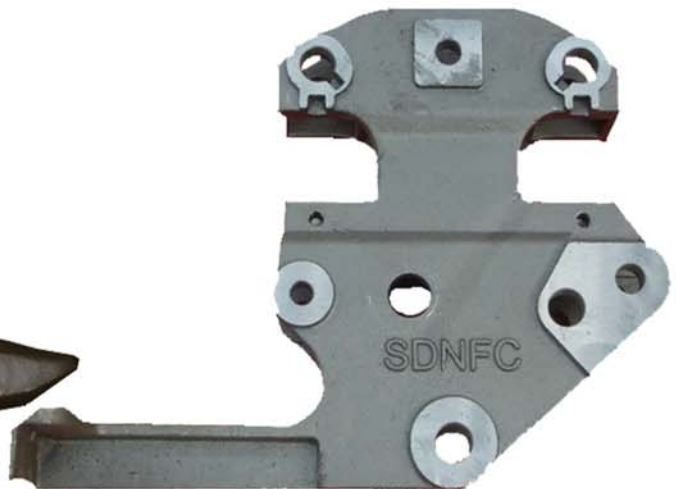
X458

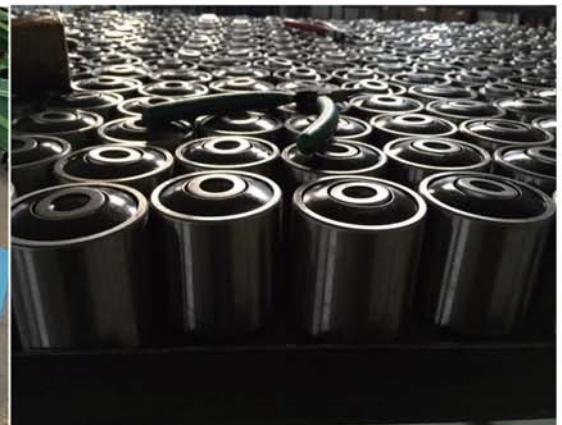
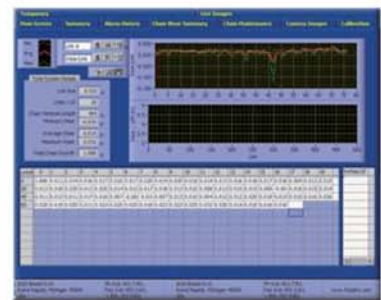
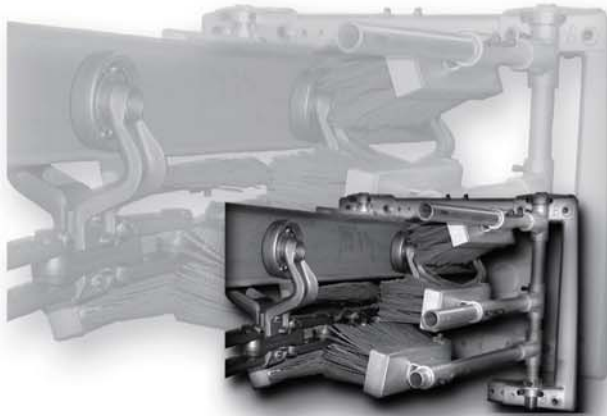
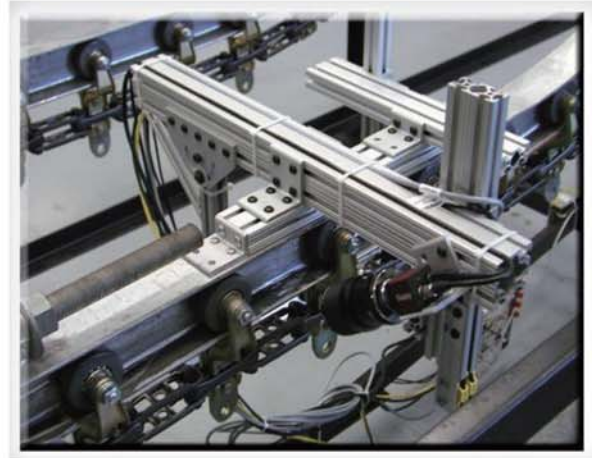


X678



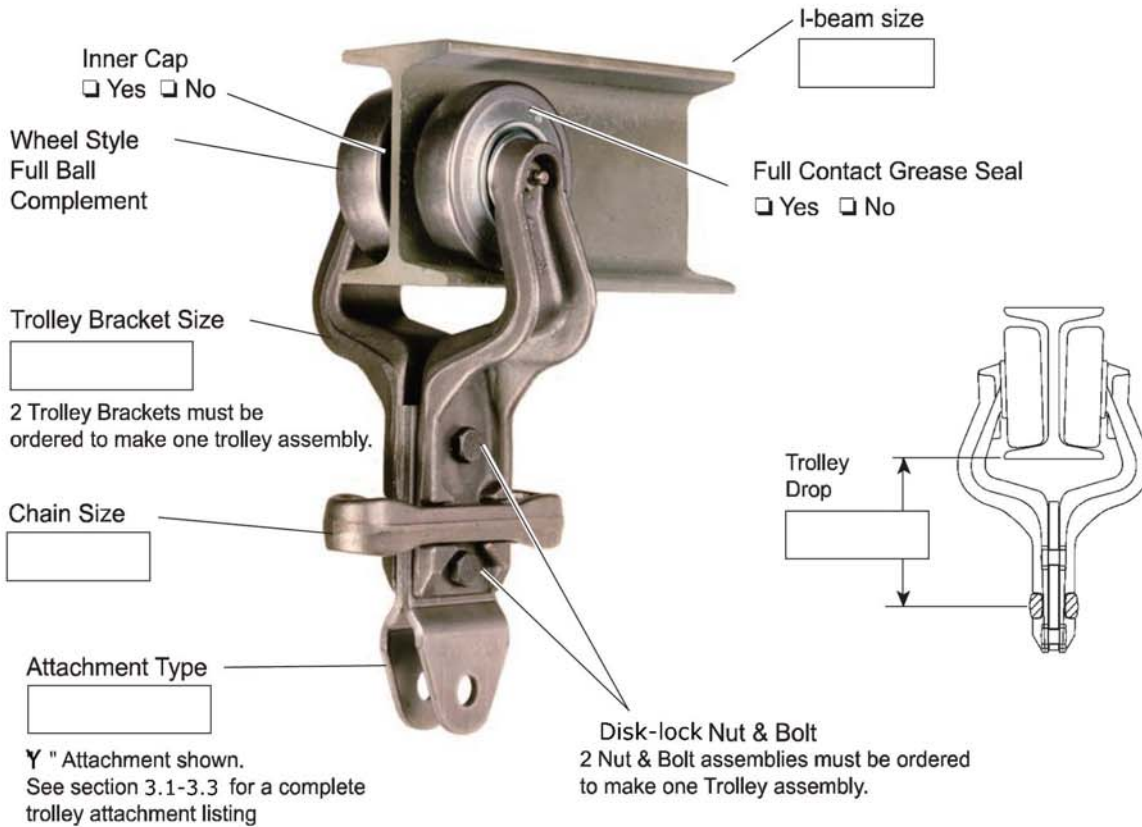
Pushed Trolley Showlist





How to Order

Overhead Trolley Assembly



Inner Cap
 Yes No

Wheel Style
Full Ball
Complement

Trolley Bracket Size

2 Trolley Brackets must be ordered to make one trolley assembly.

Chain Size

Attachment Type

Y " Attachment shown.
See section 3.1-3.3 for a complete trolley attachment listing

I-beam size

Full Contact Grease Seal
 Yes No

Trolley Drop

Disk-lock Nut & Bolt
2 Nut & Bolt assemblies must be ordered to make one Trolley assembly.

AUTHORIZED DISTRIBUTOR :



MOTION POWER AND SERVICES CO., LTD (RAYONG BRANCH)

TEL +66 38016999

🌐 www.motion.co.th ✉ sales9@motion.co.th
sales10@motion.co.th



MOTION POWER CO.,LTD (KORAT BRANCH)

TEL +66 44756092

🌐 www.motion.co.th ✉ sales3.mpk@motion.co.th
sales5.mpk@motion.co.th



RPM POWER TRANSMISSION CO., LTD

TEL +66 38212272

✉ sales@rpmpowertrans.com

